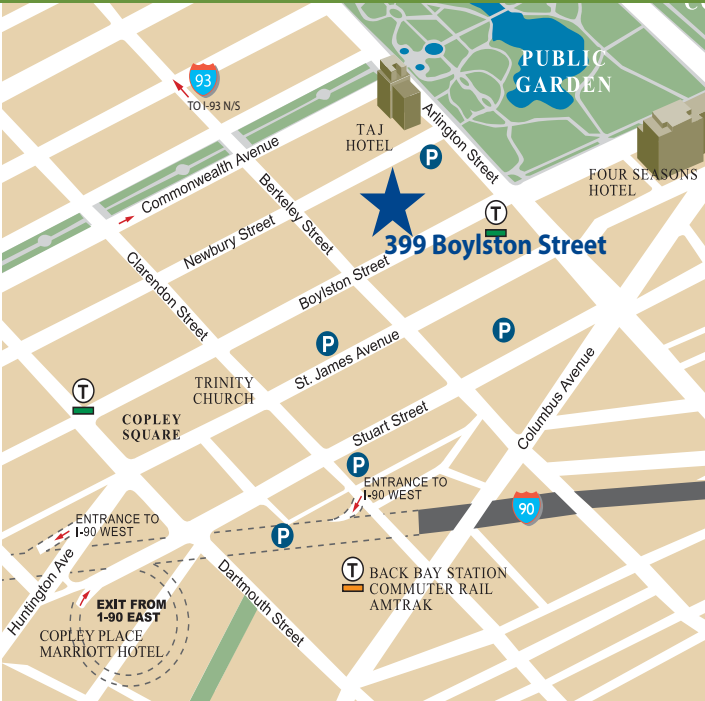


399

Boylston Street



Description and Location

399 Boylston Street is a distinguished office property located in the heart of Back Bay, between Arlington and Berkeley Streets. Designed by CBT architects, the property features a traditional red brick façade on the first eight floors and reflective glass on the top five floors, with distinctive bay windows located on the front of the building.

The property is uniquely positioned on vibrant Boylston Street, one block from the Public Garden and the famed retail district of Newbury Street. 399 Boylston is conveniently situated just a few steps away from the Arlington Street MBTA station, and minutes from the Back Bay Commuter Rail, Storrow Drive, the Mass Pike and numerous public parking options. Additionally, the property is around the corner from the Taj Hotel, Four Seasons Hotel and a variety of premier dining and entertainment venues.

Building Facts

- 228,820 square feet
- 13-story office building with street-level retail

Features and Amenities

- 15,000 – 18,000 square foot floor plates
- Recently renovated two-story, glass atrium main lobby
- Four high-speed passenger elevators in one bank
- On-site property management
- 24-hour professional security staff
- Advanced telecommunications infrastructure and service
- Ground-floor retail including Rochester Big & Tall, Jos.A Bank and Vidal Sassoon

Available Space

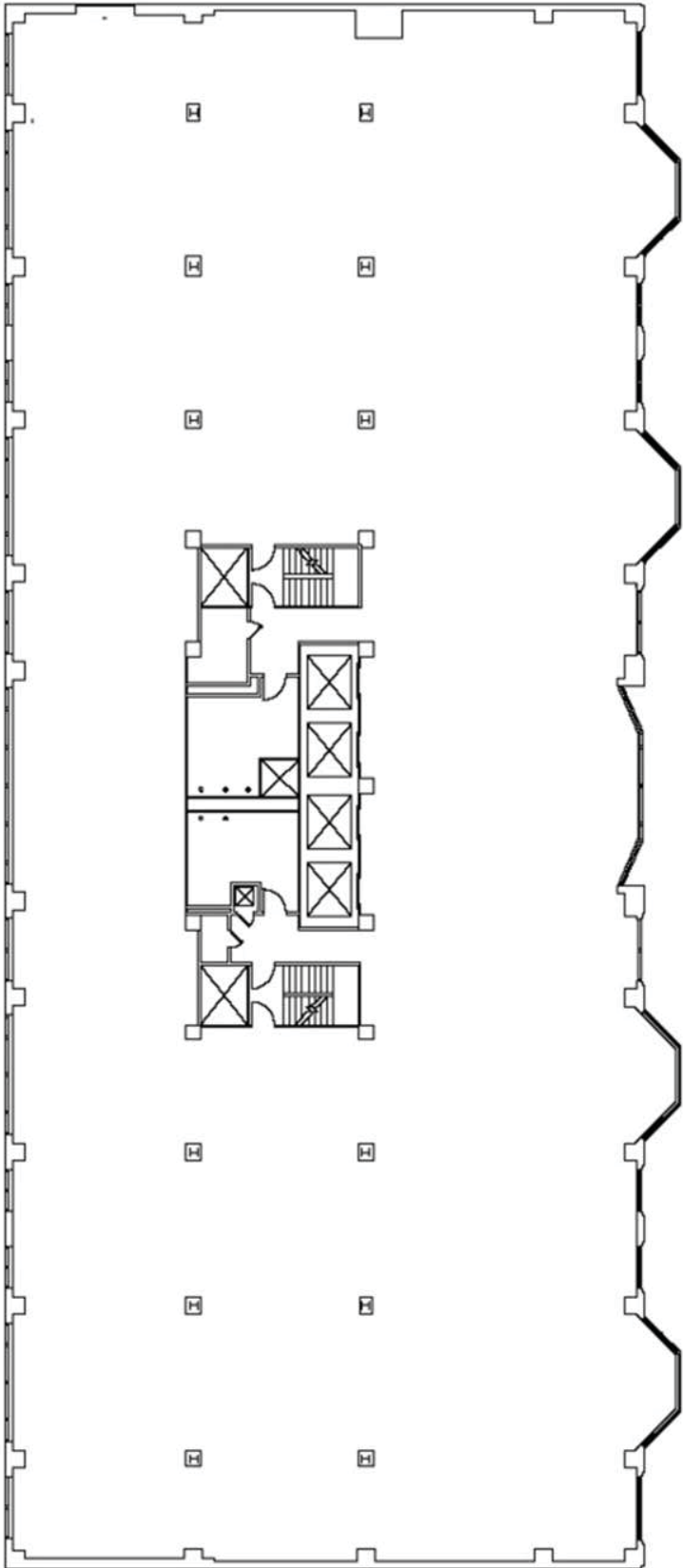
- 8,978 sf on the 2nd floor
- 18,283 sf on the 5th floor
- 4,664 sf on the 7th floor
- 7,000 sf on the 11th floor (available 6/1/2010)

SHORENSTEIN
Contact

399

Boylston Street

5th Floor | 18,283 SF



11th Floor | 7,000 SF

